

Operations

Mission Operations and Sustainment

LinQuest supports the operations and sustainment of critical DoD systems including MILSATCOM, multi-service research and test space systems, and GPS. LinQuest combines systems engineering domain expertise and user communities' requirements to support mission-critical, high-tempo operational environments on systems such as Milstar, AEHF, GPS, the five R&D, and operationally-responsive satellites operated by the Space Development Test Group.

Mission Planning

- Satellite operations, orbit analysis
- Development of mission planning tools
- Operational application of mission planning tools
- Mission planning with warfighters
- Constellation redeployment planning
- OPLAN Annex K review and analysis
- AFSCN scheduling for launch and on-orbit missions

Operations Center Support

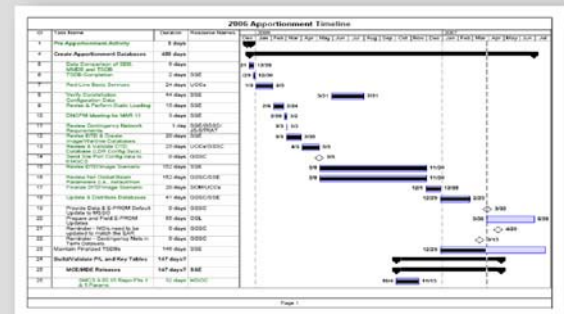
- System anomaly impact assessment and resolution
- System situational awareness dissemination
- Operational procedures definition
- System trend analysis and troubleshooting (i.e. C2, Payload, Platform, and Terminal)
- Warfighter help desk support
- Satellite mission and C2 operations/contact support

Integration, Activation, Sustaining Engineering

- CONOPS development and review
- Payload transition management and planning
- Systems/facility integration and installation
- Operational and functional testing
- Procedural guides, technical manuals, and standard operating procedures
- Transition to operations
- Operational "Glueware" development
- System maintenance, configuration management, and logistics

LinQuest is proud of our track record of excellence in supporting mission critical systems in challenging operational environments. We strive to continually enhance our ability to meet the operational needs of system end users.

Copyright © 2004-2011 LinQuest Corporation. All rights reserved.



Mission Planning



Situational Awareness



On-orbit Test and Operations

