

NCWT

Network-Centric Waveform Engineering Tool

The Network-Centric Waveform (NCW) Engineering Tool (NCWT) is an engineering software tool designed to analyze NCW networks, and estimate the satellite power and bandwidth requirements needed to support the networks. NCWT is being used in support of the prophet program and WIN-T developmental test.

Features

- Windows compatible software application
- Scenario definition
- Preinstalled terminal and commercial satellite models
- Ku and Ka network and terminal planning
- Traffic modeling
- Bandwidth and power calculation
- Multiple bandwidth segments
- Network-centric Waveform modem modeling
- Modem file output
- Reports

The bandwidth and power are calculated using terminal power, terminal location, satellite performance, traffic characteristics, and other statistical values. The output of the tool is a report on the bandwidth and power required to support a particular NCW network.

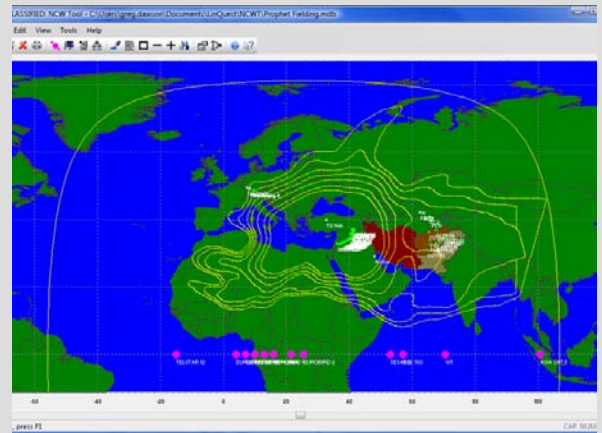
Applications

The NCWT was developed for the Department of the Army and PM WIN-T to accomplish the following applications:

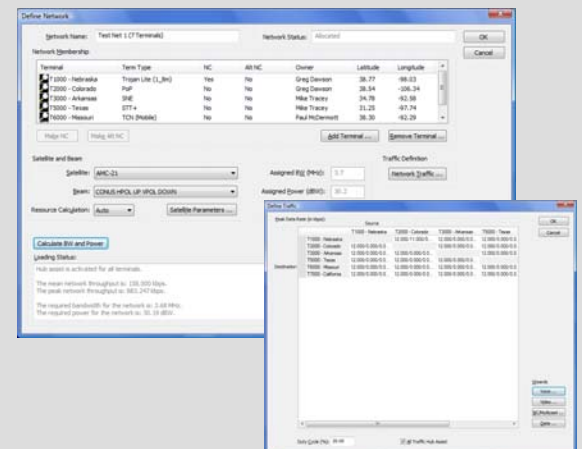
- NCW modem and network planning
- Power and bandwidth estimation
- Satellite resource provisioning
- Performance analysis
- Fielding support
- Trade studies and analysis of alternatives
- Operations support



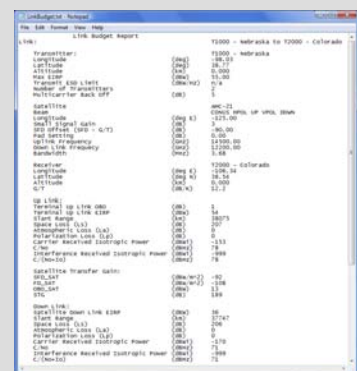
Copyright © 2004-2011 LinQuest Corporation. All rights reserved.



Scenario Definition



Satellite Network Engineering



Results Analysis